

Quick Delivery Home



Actual siding color is "Natural Clay"

Homesite #8

The Griffin

3 bedroom ~ 2.5 bath
2200 sqft

\$527,280*

- First floor living at its best!
- Hardwood in the common area on the first floor
- Crown molding
- Elegant fireplace with custom mantel
- Gourmet kitchen with granite and stainless steel appliances
- 1st floor master bedroom suite with walk-in closet
- Energy efficient *Green* home with gas heat
- Still time to customize finishes

*See back for more details



Gary Emerito 860-716-7601 gemerito@bhhsne.com
Susie Ouellette 860-462-8200 susanouellette@bhhsne.com
Karen Mendes 860-944-8585 karenmendes@bhhsne.com

CARSON WAY

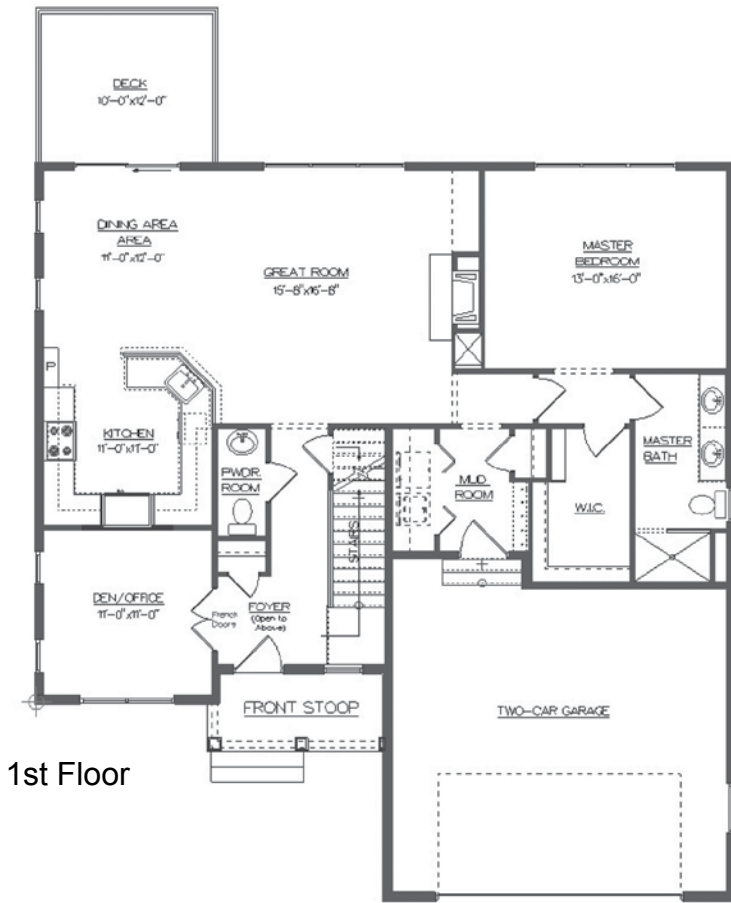
©2017 An independently operated member of BHH Affiliates. Equal Housing Opportunity.
Prices, terms and availability subject to change. (Dec 2017-revised)

LANDWORKS DEVELOPMENT

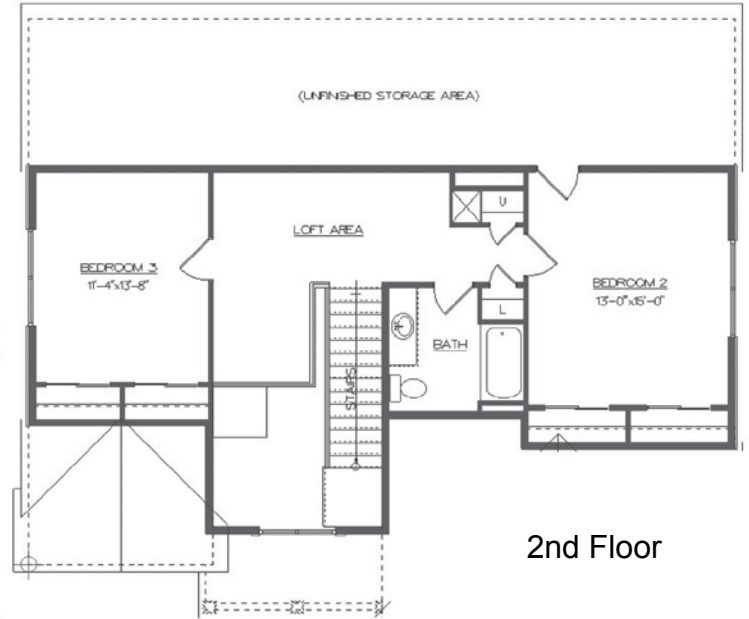


NELSON CONSTRUCTION

The Griffin Floorplan



1st Floor



2nd Floor

Pre-Selected Changes/Options

Selections Package 1

Elevation II	\$2,100
Add stone to front elevation (wrap corner)	7,500*
Add garage overhang w/brackets	1,500*
Add 28 sf (9 sf 1st floor, 19 sf 2nd floor)	3,250
Add 2 operable windows to Den/Dining Room	1,050
Add 2 operable windows to Breakfast Area	1,050
Add steps from deck to grade level	625
Vertical siding at front porch	1,620
Arts & Crafts front door	155
Master Bath 2nd Sink Option	950

Total: **\$19,800**

Selections Package 2

Switched electrical outlets in Master Bedroom	\$200
Recessed light at Master Shower	225
Recessed lights in 2nd floor hall/loft	500
Kitchen undercabinet lighting	575
Garage Entry Keypad	75

Total: **\$1,575**

Grand Total: **\$21,380**

Base Price	\$514,900
Plus Options	+\$21,380
Total	\$536,280
Builder Special	- \$9,000*
Sale Price	\$527,280

***Exterior upgrades-No Extra Charge**